

stězka
ČESKOU KANADOU

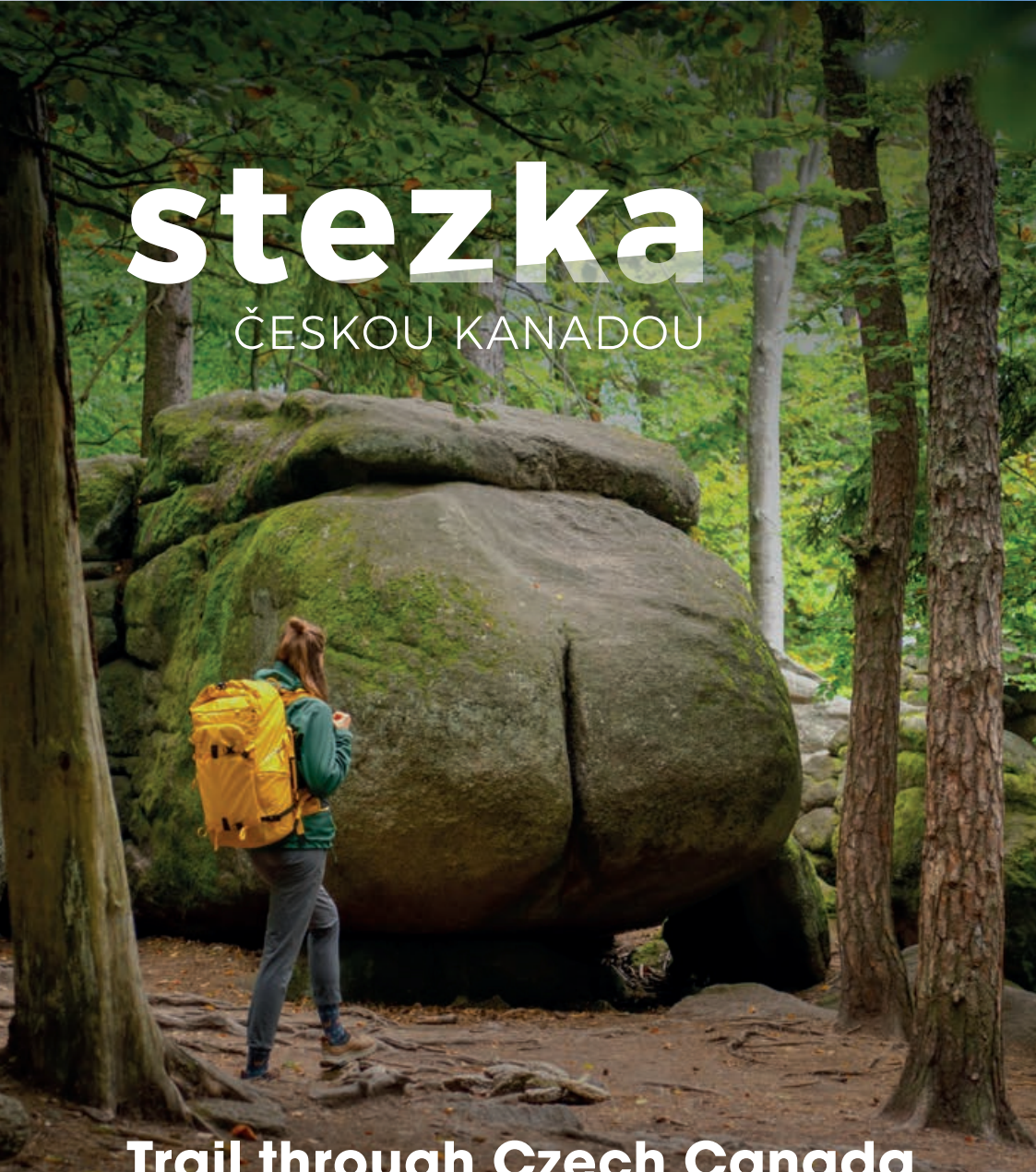
Jihochesky kraj

**ČESKA
NA
DÁL**

Každé jaro a podzim s námi můžete vyrazit na Stězku Českou Kanadou na výšlap Kanadský hůlček.

#ceskakanada #stezkaceskoukanadou #kanadskyhulcek
www.stezkacz.cz | www.facebook.com/ckanada.cz | www.instagram.com/ckanada.cz

Vydal: Destinační management Česká Kanada, z.s.
Fotografie: archiv JČCR, Petr Hlíbenka, Adam Hudec, Martin Kozák, Jarmír Pguľa
Textové podklady: Adam Hudec
Mopová část © Kartografie PRAHA, a.s. 2024
Tisk: RAJIN tiskárna s.r.o.
1. vydání 2024. Neprodělné.

A full-page photograph of a hiker with a large yellow backpack walking away from the camera on a forest path. The path is covered with fallen leaves and tree roots. In the center of the path is a large, rounded, moss-covered rock. The forest is dense with green trees and foliage. The text 'stezka' is written in large white lowercase letters at the top, with 'ČESKOU KANADOU' in smaller white uppercase letters below it. At the bottom, the text 'Trail through Czech Canada' is written in white.


stezka

ČESKOU KANADOU

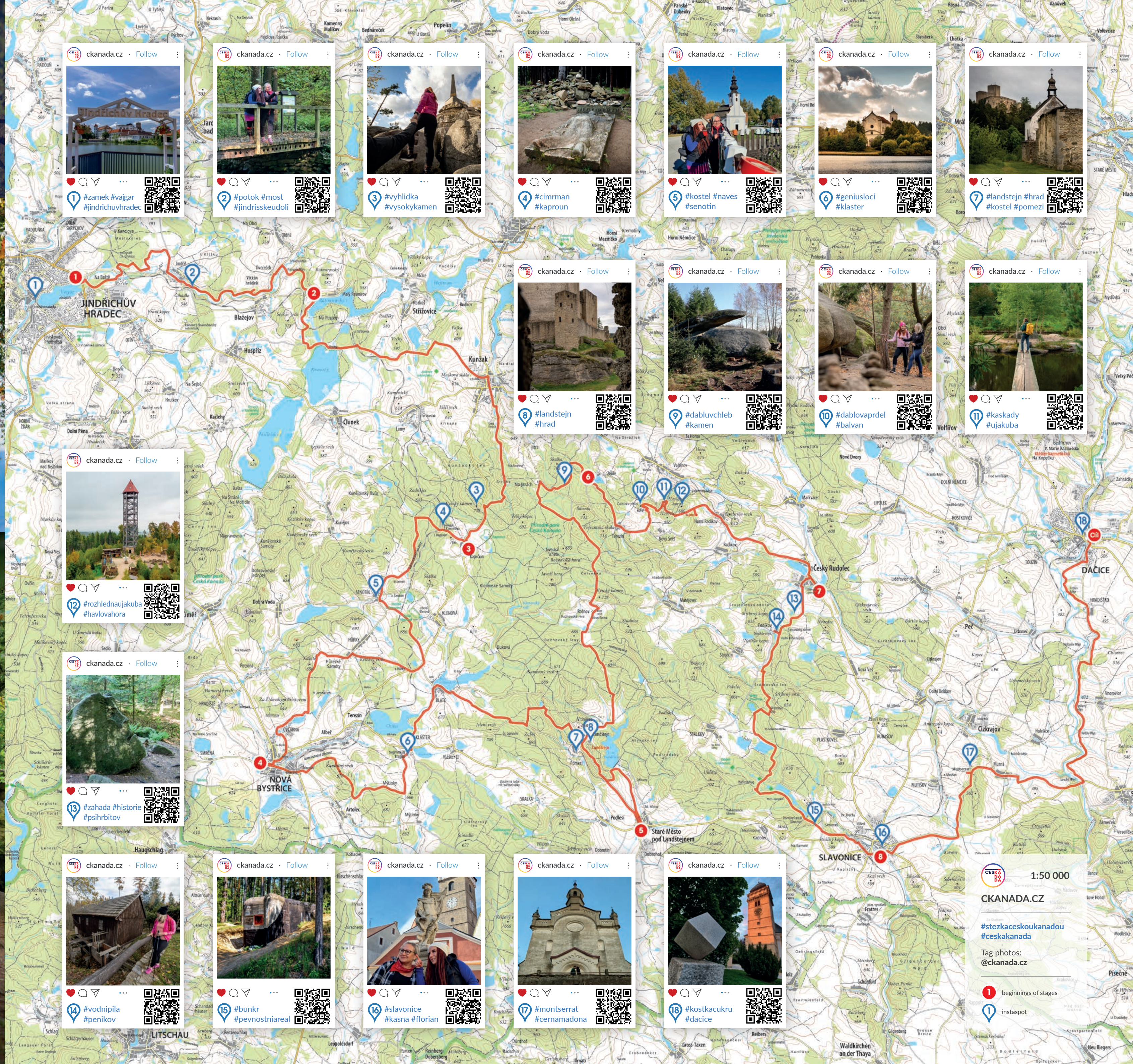
Trail through Czech Canada

 **8 stages / 120 km**

Trail through Green Canada

 **8 stages / 120 km**



**CESKA
NA
DA**



CKANADA.CZ

Tag photos:
@ckanada.cz

01 Jindřichův Hradec > Malý Ratmírov

 11,8 km  3 hours 20 minutes

Both the narrow rocky canyon and the wide bottomland in this area were shaped by the Hamerský stream. You can take the trail along its coast from the outskirts of Jindřichův Hradec up to the Malý Ratmírov holiday resort.



Your journey begins on the outskirts of Jindřichův Hradec. It only takes minutes to walk through the subway under the road, and once you cross the bridge over the Hamerský stream, you can leave everyday worries behind and let your feet carry you along. After a while you will reach Bobelovka cottage area and upon passing by the protective stone wall near a former shooting range you will enter Šajba (or the City Forest). Through the forest, across the meadow, on the road and over a small stone baroque bridge you will arrive to Jindřiš.

It will not keep you long though. The first stage of the trail, which runs parallel to the Henry's Nature Trail (where you can learn many interesting facts about the local fauna and flora on the information boards), will take you to a breathtaking valley called Jindřišské údolí. Your will walk in close proximity to the meanders of the Hamerský stream, along the ruins of Vítekův Hrádek (Vítek's Castle) and Dvoreček village.

From here you will enter the second, wilder part of Jindřišské údolí, and after crossing it you will find yourself at your first destination – the dam of the Ratmírovský pond.

 **Destination: Malý Ratmírov** / www.chatyratmirov.cz



02 Malý Ratmírov > Kaproun

 14,6 km  4 hours

The part of the trail from the iconic Ratmírovský, Krvavý and Střížovický ponds via forest paths and the town of Kunžak up to the highest point of our region can rightly be considered the gateway to Czech Canada. Welcome!

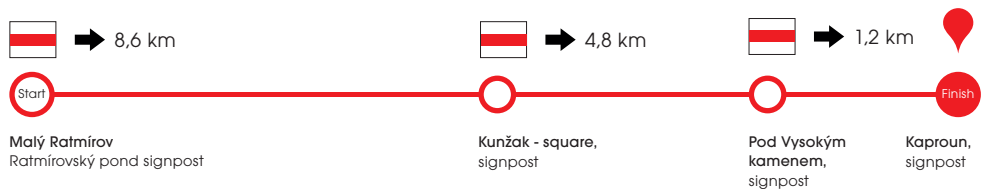


The second part of the Czech Canada trail begins in the Malý Ratmírov holiday resort. From the Ratmírovský pond, which is very popular with tourists, you will cross the tracks of the narrow gauge railway and end up at the second pond called Krvavý (The Bloody Pond).

About three kilometres from the Krvavý Pond you will join a quiet road that will take you to Kunžak. After recharging your batteries, you will follow the red hiking sings along the gully via a landscape that has its own charm despite being affected by the bark beetle infestation.

Your climb through the Kunžacký forest ends below the highest point of Jindřichův Hradec, Vysoký kámen (the High Stone). After its visit it only takes about one kilometre down a narrow local road to get to your destination, the village of Kaproun.

 **Destination: Kaproun** / www.kunzak.cz



03 Kaproun > Nová Bystřice

 15,8 km  4 hours 20 minutes

On your journey to Nová Bystřice you will visit the picturesque villages full of local stories, the unique narrow gauge railway station in Kaproun, and the paths of the most famous Czech-Canadian highwayman.

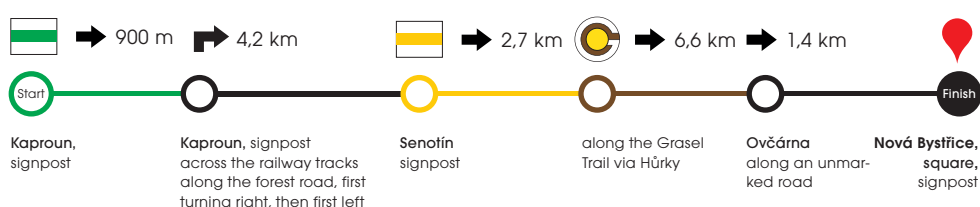
The third stage of the trail begins with a descend along a fascinating nature trail from the village of Kaproun to the narrow gauge railway station of the same name. Once you cross the tracks, be sure to follow the map so that the unmarked forest paths take you first to a small nameless pond on the edge of the forest, and then via the vast meadows to the village of Senotín.

Walking past a chapel and a fence decorated with numerous mugs, you will follow the yellow nature trail on the left behind the pasture fencing to the forest stone field and further, outside the forest, to the Hůrky railway station.

From there, the Grasel Trail will take you through the village of Hůrky and the landscape with beautiful views to Ovčárna, a district of Nová Bystřice. From there, you only have to walk a short distance along the road, and in a few moments you will find yourself on the Mírové náměstí (the Peace Square) in Nová Bystřice.



 **Destination: Nová Bystřice** / www.novabystrice.cz



04 Nová Bystřice > Staré Město pod Landštejnem

 19,8 km  5 hours 30 minutes

This walk through the forests and pastures of Czech Canada offers views you will not find anywhere else: the Church of the Holy Trinity in Klášter, hidden forest springs and ponds, and the majestic ruins of Landštejn, to name but a few.



From Nová Bystřice you will rejoin the Grasel Trail. After about 7 kilometres of walking mainly in forests and between pastures, you will arrive to the Church of the Holy Trinity in Klášter. This impressive building and its picturesque surroundings are definitely worth a longer visit (as well as a few pictures for you social media).

After some more time on the Grasel Trail, you will reach the village of Blato. From there, you will again pass through the immediate vicinity of the vast pastures and reach forests that hide the ruins of Landštejn Castle. You will also appreciate the hidden places of these forests, from hidden ponds and pools to springs with crystal clear water.

This part of the trail through Czech Canada continues via Pomezí and the settlement around Landštejn Castle to a place called U Kříže. Once you have taken enough tie admiring the beautiful panoramas of Staré Město pod Landštejnem, you can take the road down to the town following the red hiking trail.

 **Destination: Staré Město pod Landštejnem** / www.staremestopl.cz



05 Staré Město pod Landštejnem > Zvůle

 17 km  5 hours

Czech Canada will reveal even more beautiful spots during your journey from Staré Město pod Landštejnem to the Zvůle Pond. Deep forests, herds of grazing bison, or Ďáblův chléb (the Devil's Bread) rock structure are waiting in places that have changed beyond recognition due to the bark beetle infestation of recent years.

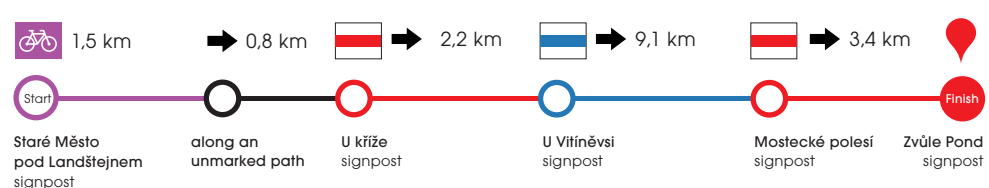
From Staré Město pod Landštejnem follow the cycle track and after crossing the meadow you will arrive back to the U Kříže viewpoint. From here, the red hiking trail with several interesting stops (for example, a beautiful hidden chapel or a view of a reservoir) will lead you to Landštejn Castle.



For the next five kilometres you will follow the blue hiking trail. When you have sufficiently enjoyed the hike through the changing forests and the stop at the Bochník and Pišta ponds, you will arrive to the Rožnov Bison Farm. You will almost always find majestic bison in the nearest pastures.

The fifth stage trail goes further to Mostecké polesí, where you switch from the red to the blue hiking trail. From Ďáblův chléb, an interesting rock structure in an almost moonscape, it is only a short walk to your destination, the Zvůle Pond tourist area.

 **Destination: Zvůle** / www.chatyzvule.cz



06 Zvůle > Český Rudolec

 10,5 km  3 hours

Next stage of the trail, more new discoveries. Among many other things, you will see the famous Ďáblova prdel (the Devil's Ass), the surroundings of the U Jakuba lookout tower on Havlova hora (Havel mountain) and the famous castle in Český Rudolec.

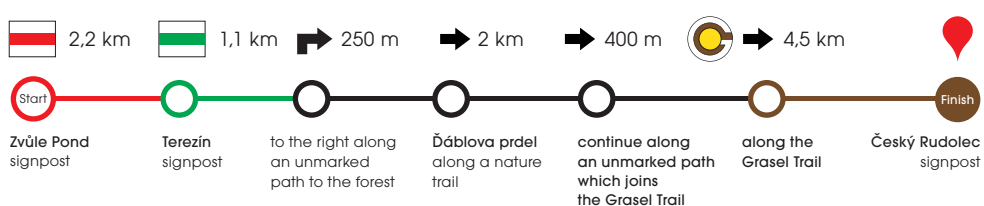
The sixth part of the Czech Canada trail is the shortest one, which is, however, more than compensated by the stops that await you along the way. Have your camera at the ready, you will soon learn why.

When you arrive from Zvůle to Terezín (the red hiking trail) and continue on the green hiking trail for a while, you only have to take one small turn to an unmarked road and you will find yourself at Ďáblova prdel, the most famous (not surprisingly) boulder in the area.

The nature trail will take you from there past the game preserve and the cascade of ponds up to Havel Mountain – to the area of the U Jakuba lookout tower. Once you finish exploring the lookout tower and its rich surroundings, you will go further, along the Grasel Trail, through Horní Radkov to Český Rudolec. In your destination, you can visit either the famous local castle, or the castle brewery next door.



 **Destination: Český Rudolec** / www.ceskyrudolec.cz



07 Český Rudolec > Slavonice

 13,4 km  3 hours 50 minutes

A mysterious dog cemetery, a water sawmill, places where Grasel or Pfaffenschlag committed robberies, an archaeological sight, these are only a few interesting spots on the trail between Český Rudolec and Slavonice, bordered by hidden views of two local castles.

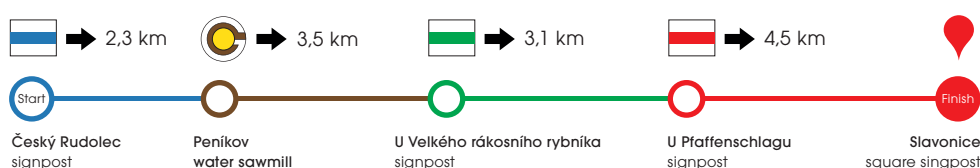
Shortly after the start of this stage, on the hill behind Český Rudolec, you will get a view of the local cemetery and the Chapel of the Holy Cross. Walking along the blue hiking trail (as well as the Grasel Trail), you will find interesting hidden spots in the forest – a historical dog cemetery or Francouzský kámen (the French Stone).

The water sawmill in Peníkov is also worth a visit. From there, the Grasel Trail will take you to boulders and other structures bearing the name of this famous highwayman. You will visit his bathroom, cave or see his "three-men gearbox".

The trail further continues through Pfaffenschlag (a place of significant archaeological excavations with more information on the information boards), past forest ponds and the fortress site dedicated to Czechoslovakian fortifications all the way to the town of Slavonice.



 **Destination: Slavonice** / www.slavonice-mesto.cz



08 Slavonice > Dačice

 18,1 km  5 hours 10 minutes

The green hiking trail will take you from Slavonice past Montserrat to Loucký mlýn (the Loucký Mill) on the Moravská Dyje river. From there, you will follow Vydří stezka (the Otter Trail) along the river valley to Dačice, the town that gave the world lump sugar.



The signage of the eighth and final section of the Czech Canada trail is simple: Slavonice and Dačice, your destination, are connected by a green hiking trail. First, it will take you out of Slavonice along a road where you need to watch your step.

After stopping at the pilgrimage Church of Our Lady of Montserrat and passing through the village of Mutná, you will arrive at the beginning of the Otter Nature Trail. The trail follows the stream of Moravská Dyje (in some places it runs along the road for a short distance) and offers many interesting views – either of the surrounding nature or of the five river mills.

The Otter Trail will take you to Dačice. There, you will pass by the Monastery of the Discalced Carmelites and the Church of St. Anthony of Padua, over the bridge over the Thaya to the Palacký Square.

 **Destination: Dačice** / www.dacice.cz

